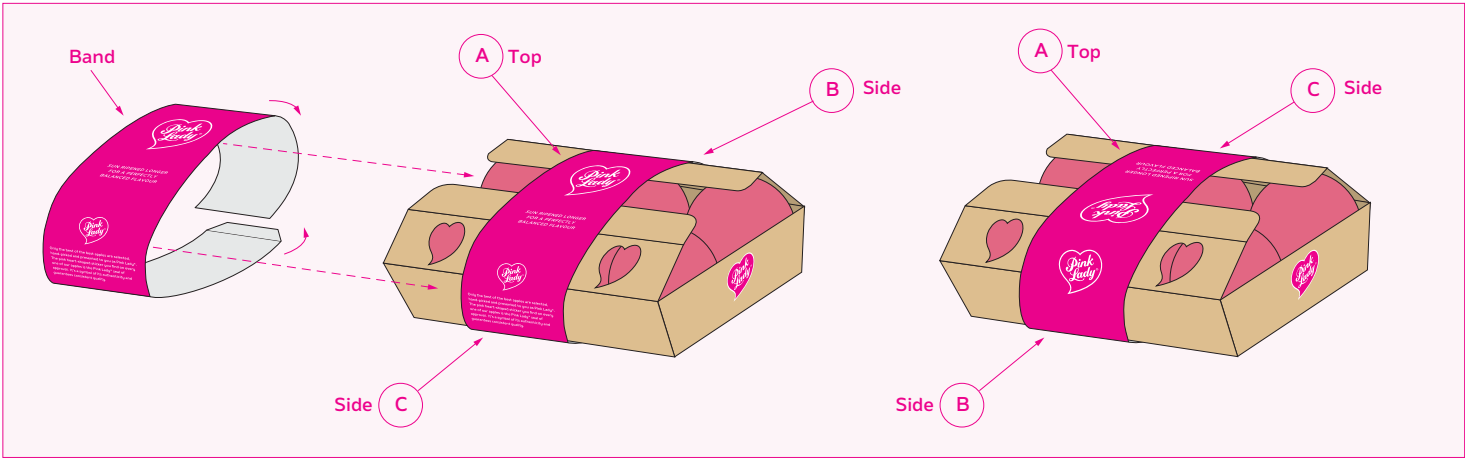


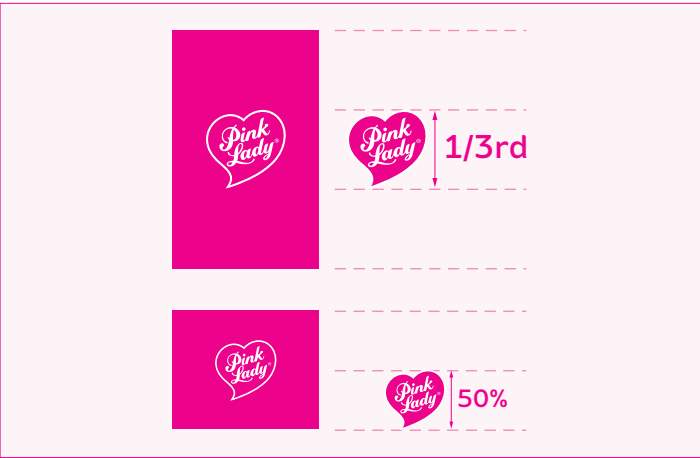
Pink Lady® Packaging Templates

6 Pack Apple Paper Tray with Band Construction

Facings



1. Logo size



Facing A Logo = 1/3rd height of the tray.

Facing B Logo = 50% height of facing.

Packaging must be approved by your regional master licensee before printing

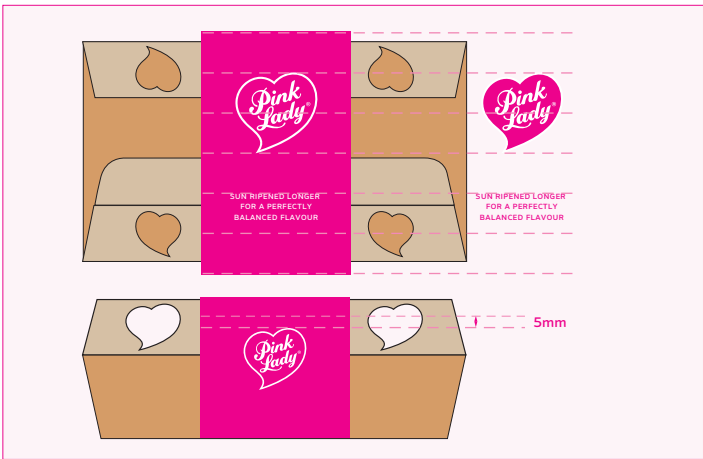
Contact your regional Master Licensee should you have any questions about packaging artwork.

3. Sun-ripened statement



Sun-ripened statement = 8 lines equal to logo height.

4. Place logo & statement



Facing A. Use a 6 row grid to align the logo and sun-ripened statement.

Facing B. Logo is 5mm from the top.

5. Size sunshine

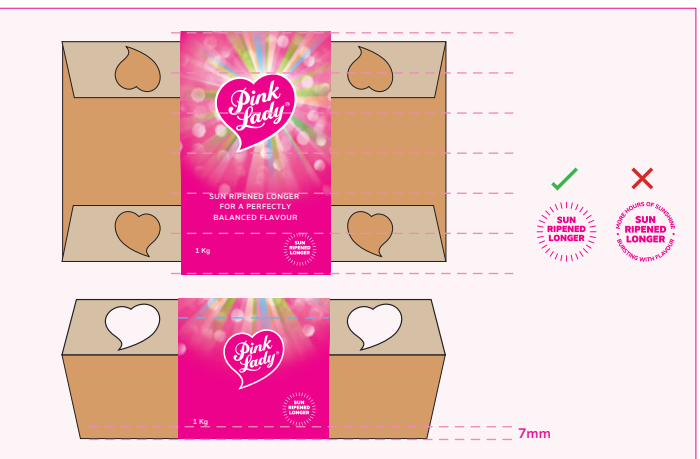


Size the sunshine device on facing A so that it finishes just behind the sun-ripened statement, without affecting readability.

The sunshine device continues over the edge at the top onto part of facing B.

Avoid making the sunshine device too large or too small.

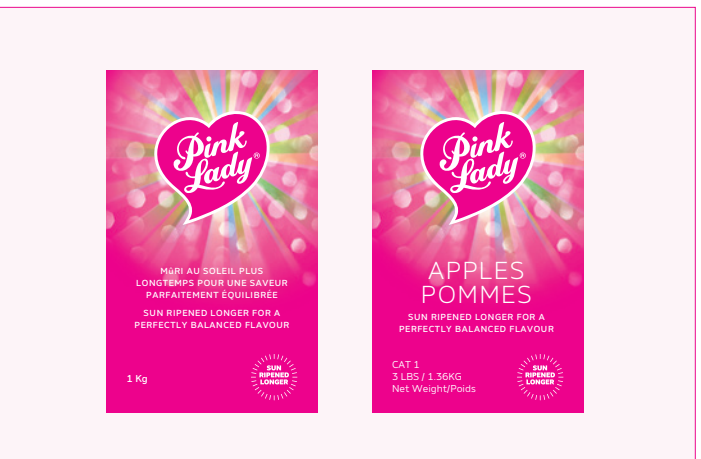
6. Weight/volume/Trust Mark



Facing A. Place weight/volume and Trust Mark in the bottom row. Allow space for margins away from the edge. **Note:** Only use the Secondary Trust Mark when the 'Sun Ripened Longer...' statement appears on the same panel.

Facing B. Place weight/volume and Trust Mark at the bottom with a 7mm margin.

7. Region specific information



Adjust layout to accommodate any regional specific pack information while maintaining the size of the logo.

